

Jerusalem Institute
for Policy Research

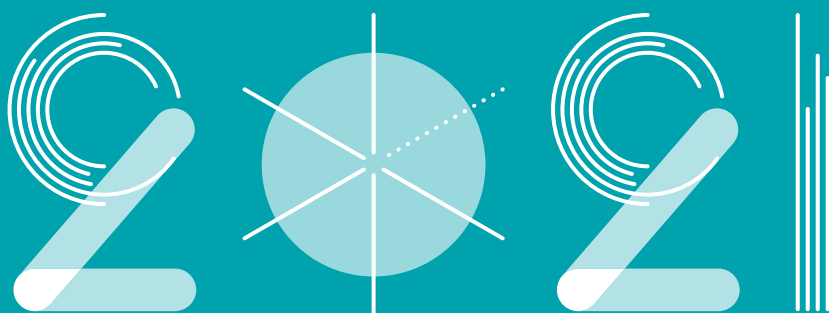
JERUSALEM
INSTITUTE
FOR POLICY
RESEARCH

מכון ירושלים
למחקרי מדיניות
معهد القدس
لبحث السياسات



JERUSALEM

FACTS AND TRENDS



At a Glimpse

Michal Korach, Maya Choshen

This publication was made possible through the generous support of our partners:



The Jerusalem Institute for Policy Research | Publication no. 564

Jerusalem: Facts and Trends 2021

Michal Korach, Dr. Maya Choshen

Assistance in Preparing this Publication:

Omer Yaniv, Netta Haddad, Murad Natsheh, Yair Assaf-Shapira

Graphic Design: Yael Shaulski

Translation from Hebrew to English: Merav Datan

© 2021, The Jerusalem Institute for Policy Research

The Hay Elyachar House

20 Radak St., 9218604 Jerusalem

jerusaleminstitute.org.il/en

jerusaleminstitute.org.il

Preface

'Jerusalem: Facts and Trends – at a Glimpse' provides an up-to-date picture of Jerusalem across a wide range of topics, including population, employment, education, building, and tourism. The publication presents the main findings of the Statistical Yearbook of Jerusalem in an accessible, userfriendly form. This publication is brief, giving a snapshot of the main Facts and Trends in Jerusalem.

The Statistical Yearbook of Jerusalem, which contains approximately 250 tables and dozens of graphs, is the main source of the data presented. The Yearbook is published annually by the Jerusalem Institute for Policy Research and the Municipality of Jerusalem. The data in the Yearbook comes from multiple, varied sources, primarily the Central Bureau of Statistics, the Municipality of Jerusalem and the National Insurance Institute.

The full English version of the Statistical Yearbook is available on the Institute's website, and can be found by [THIS](#) link.

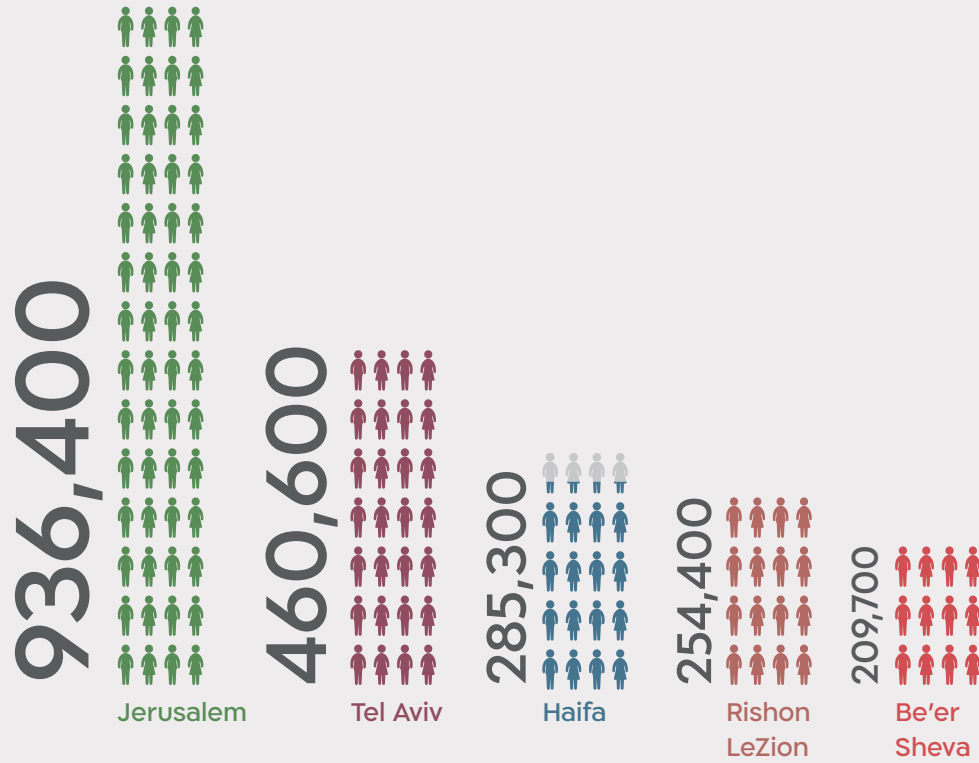
We wish to extend our thanks to all our partners who contributed data to the Statistical Yearbook of Jerusalem and to this publication, and would like to express our gratitude to Omer Yaniv, Netta Haddad, Murad Natsheh, and Yair Assaf-Shapira for their substantial assistance.

Our thanks and appreciation are also extended to Yael Shaulski for the graphic design.

Michal Korach, Dr. Maya Choshen

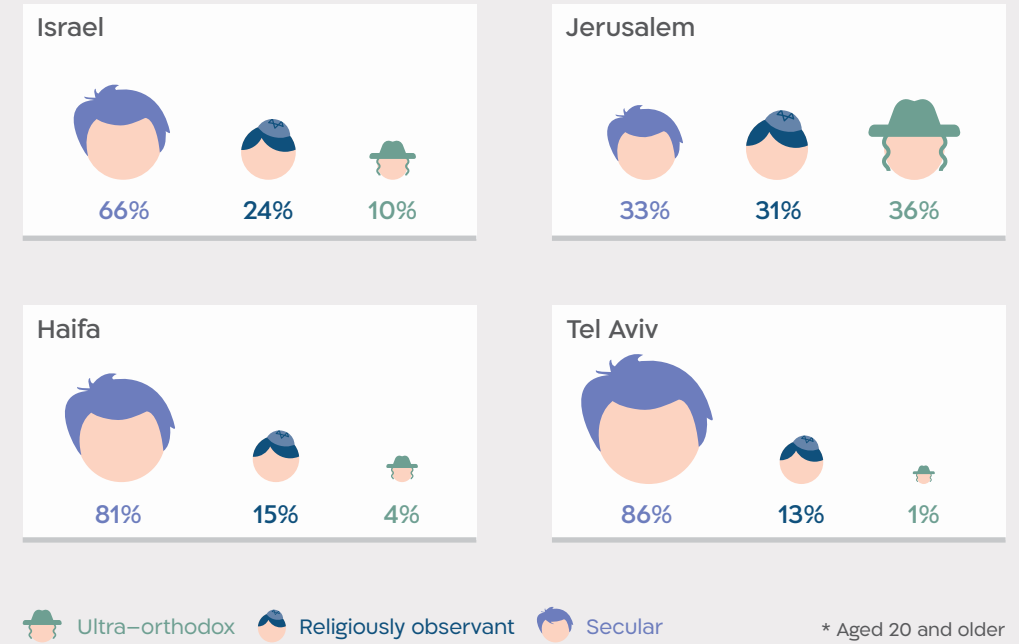
Population of Jerusalem and Israeli Major Cities, 2019

Jerusalem Institute for Policy Research



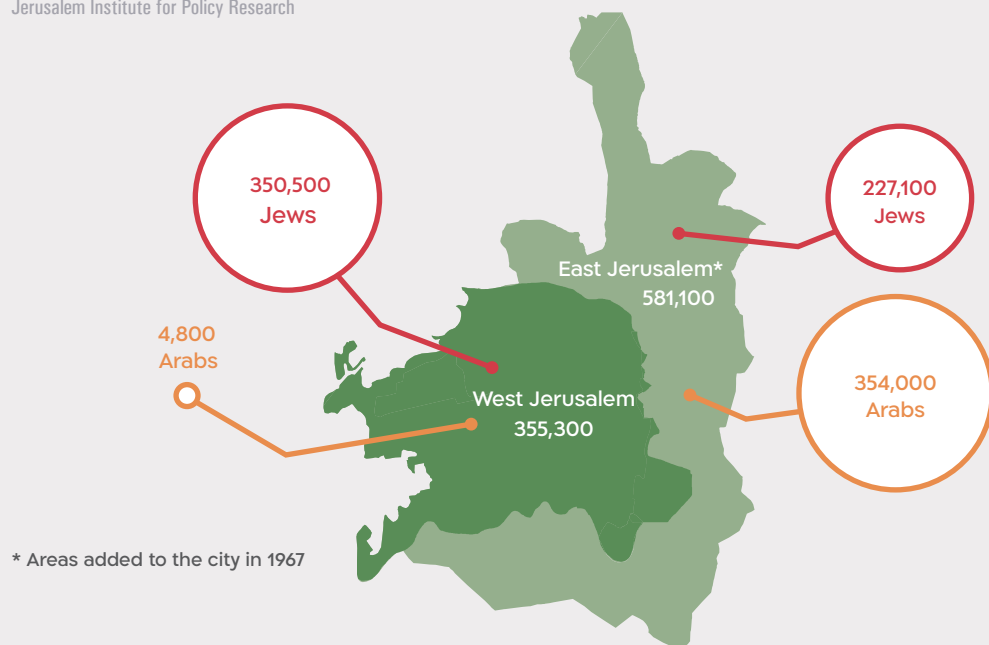
Nature of Religious Identification of the Jewish Population* in Israel and Major Cities, 2017–2019 (Average)

Jerusalem Institute for Policy Research



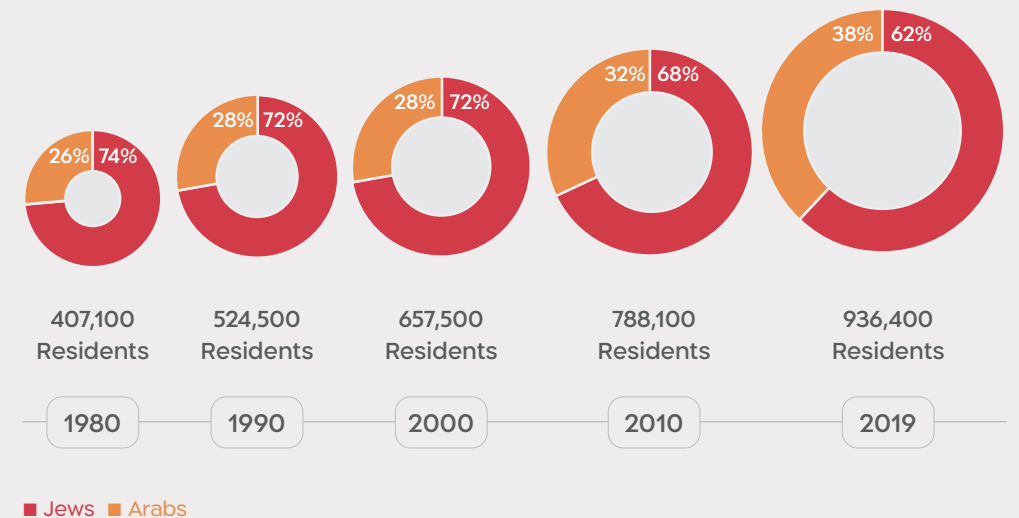
Geographical Distribution of the Jerusalem Population, 2019

Jerusalem Institute for Policy Research



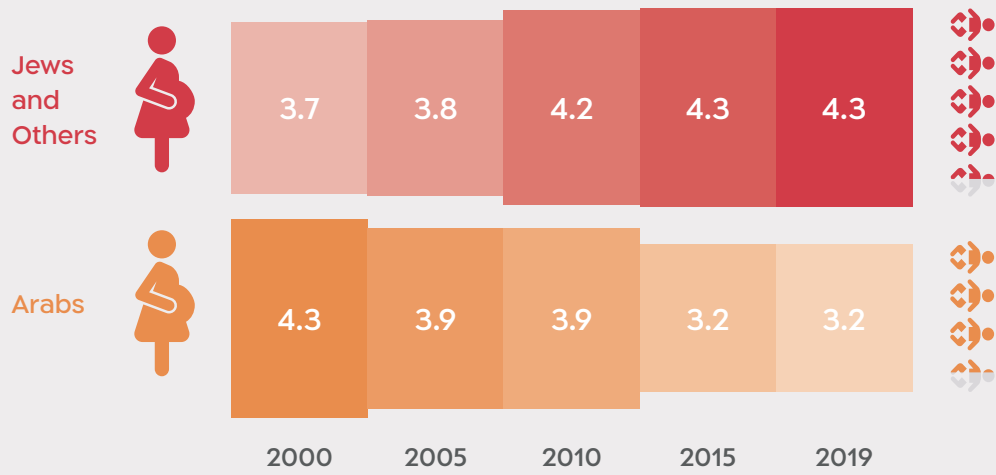
Jewish and Arab Population in Jerusalem, 1980–2019

Jerusalem Institute for Policy Research



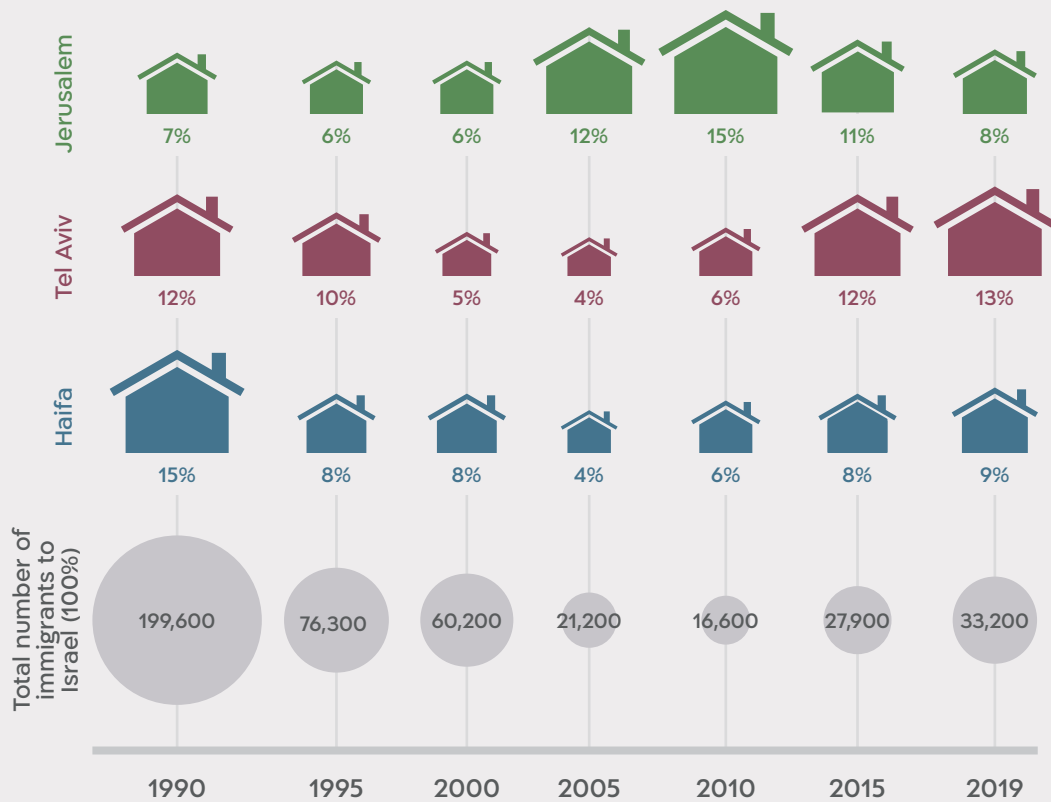
Fertility Rate of Women in Jerusalem, 2000 – 2019

Jerusalem Institute for Policy Research



First Place of Residence of Immigrants (Olim), 1990 – 2019

Jerusalem Institute for Policy Research



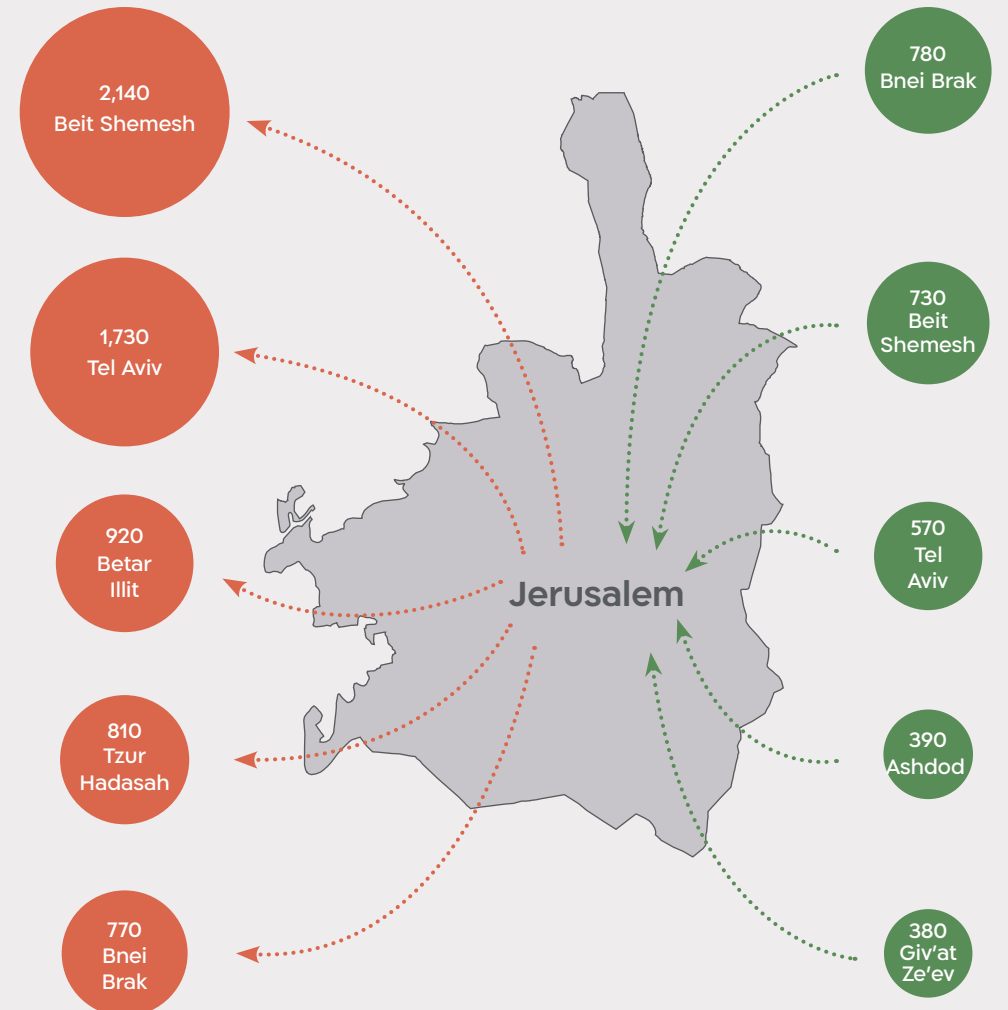
Migration to and from Jerusalem, 2019

Jerusalem Institute for Policy Research



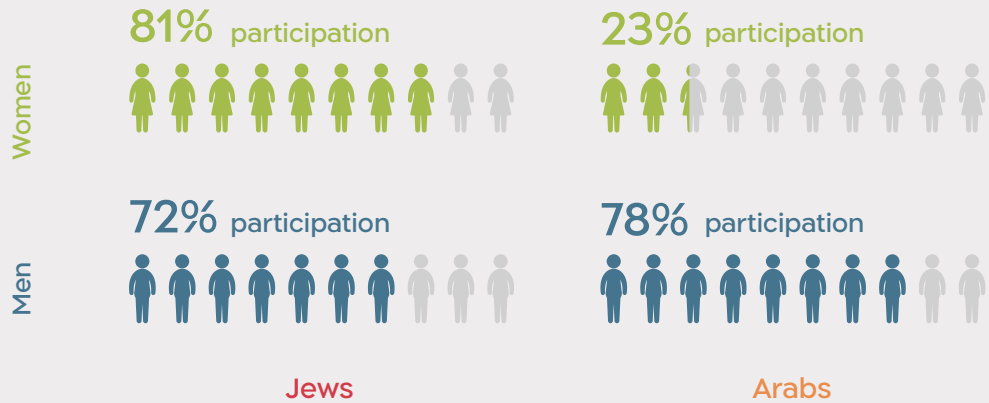
5 main localities

5 main localities



Participation Rate in the Labor Force* in Jerusalem, by Population Group and Gender, 2019

Jerusalem Institute for Policy Research



* Aged 25-64

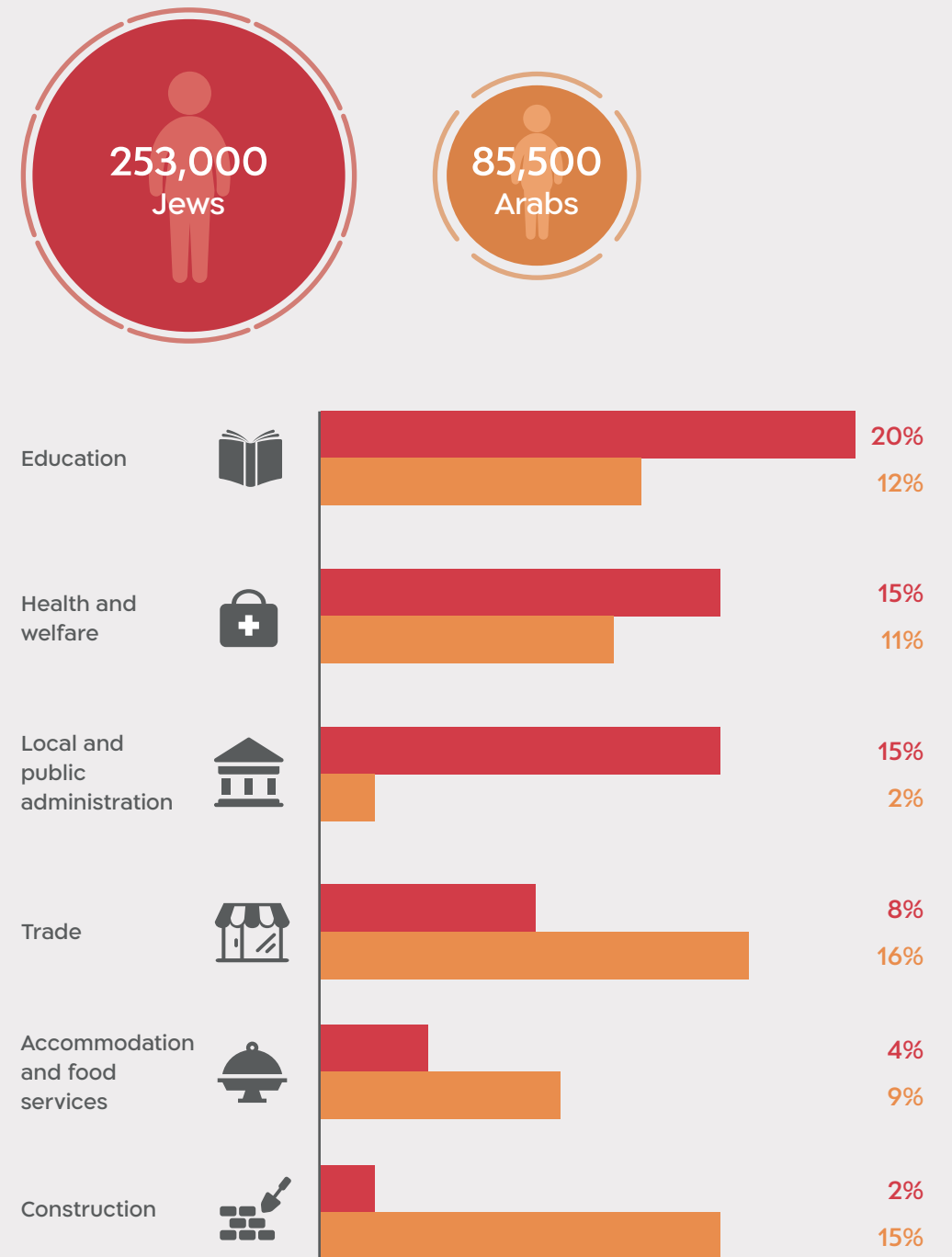
Average Monthly Wage in Israel, Jerusalem, Tel Aviv, and Haifa, by Gender, 2018

Jerusalem Institute for Policy Research



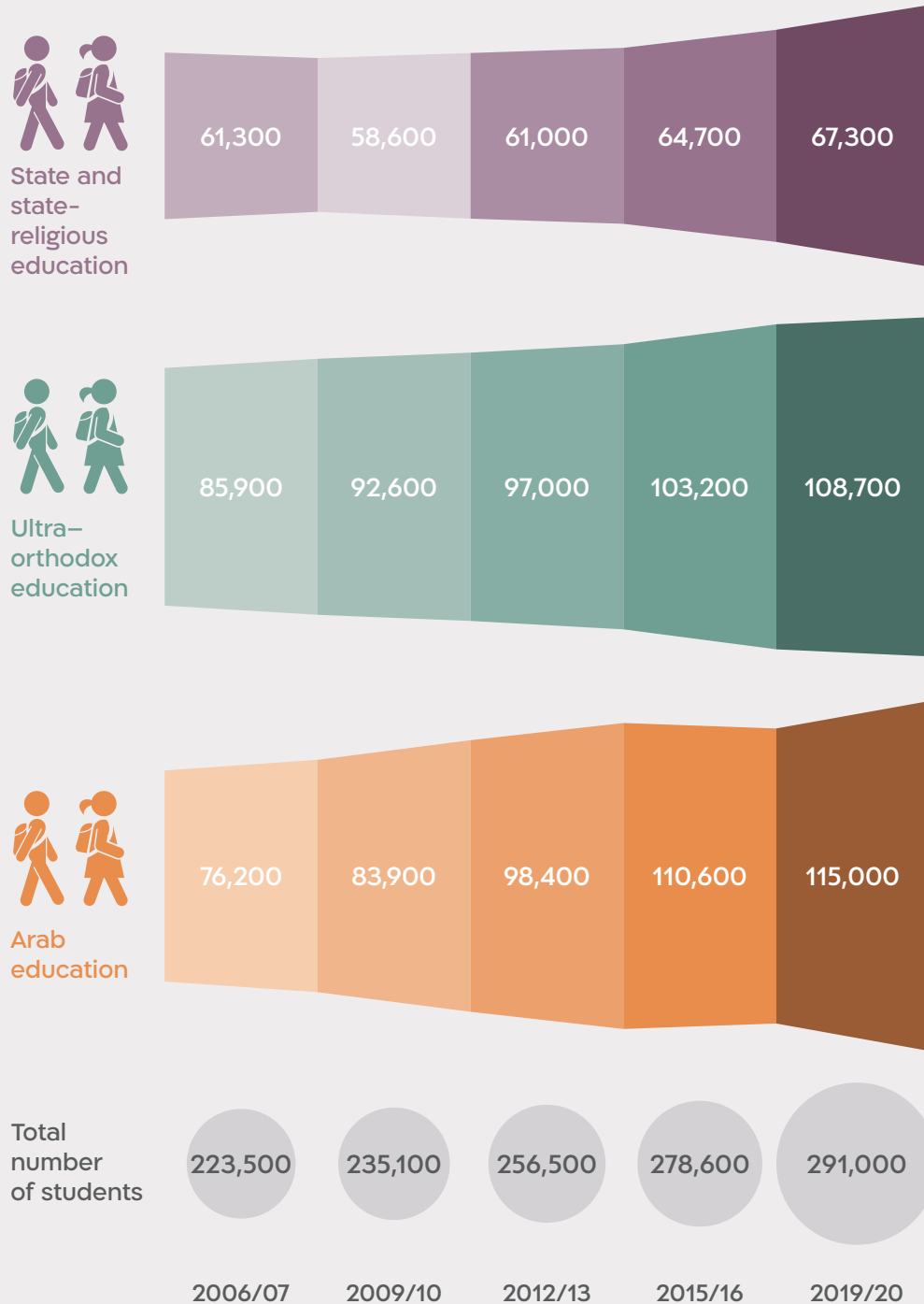
Employed Persons Working in Jerusalem, by Population Group and Selected Economic Sector, 2019

Jerusalem Institute for Policy Research



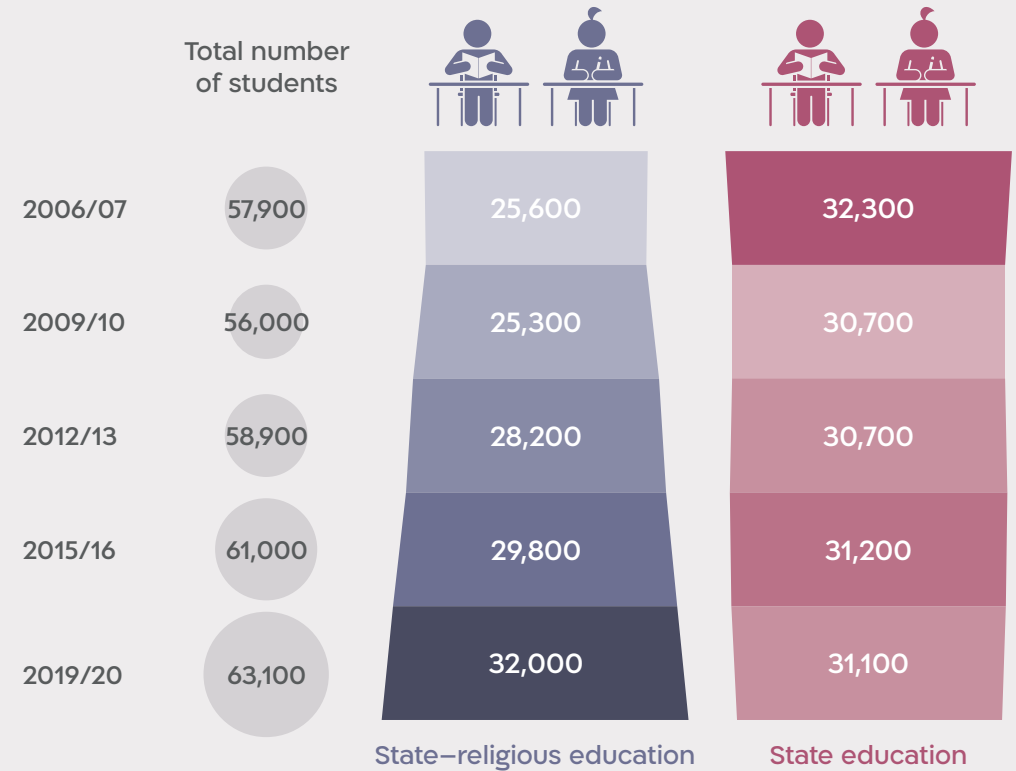
Students in the Education System in Jerusalem, by Sector

Jerusalem Institute for Policy Research



Students* in State and State-Religious Education in Jerusalem

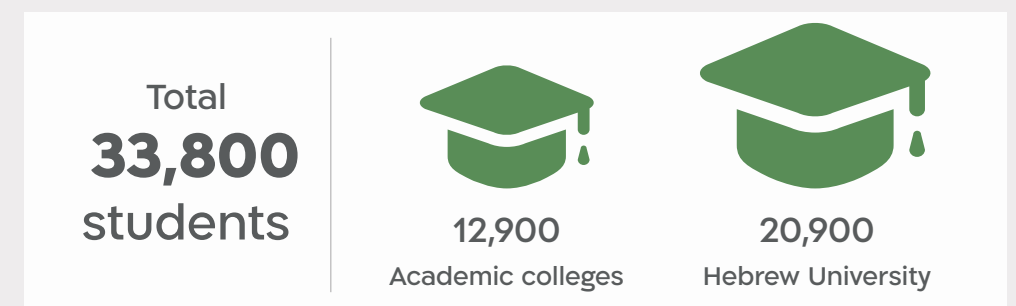
Jerusalem Institute for Policy Research



* Not including grades 13 and 14, special education, and state-ultra-orthodox education

Students in Higher Education Institutions in Jerusalem, 2019/20

Jerusalem Institute for Policy Research



Apartment Prices* in Israel, Jerusalem, Tel Aviv, and Haifa, 2015, 2020

Jerusalem Institute for Policy Research

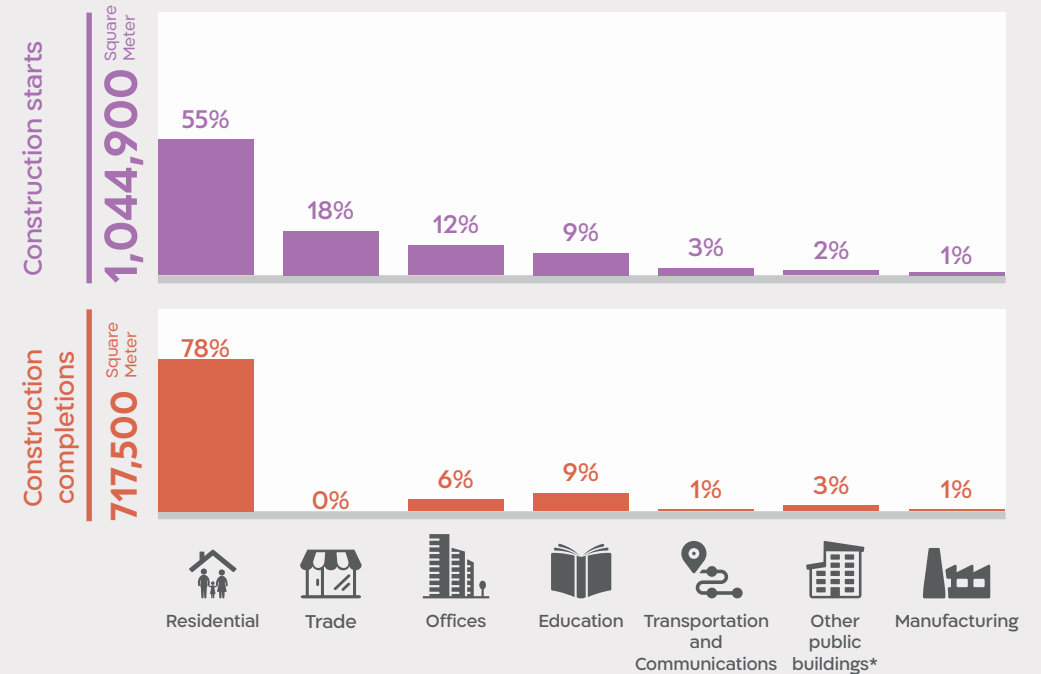


2015 2020

* Average price of 3.5–4 room existing apartments, in millions (NIS)

Construction Starts and Completions in Jerusalem, by Main Purpose, 2019

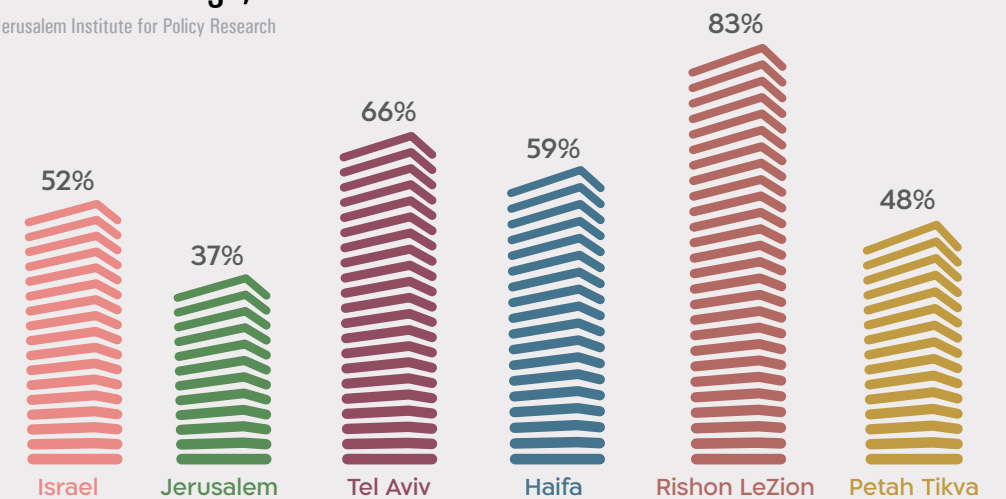
Jerusalem Institute for Policy Research



* not for the purpose of healthcare or education

Construction Starts of Apartments in Tall Buildings,* 2017–2019

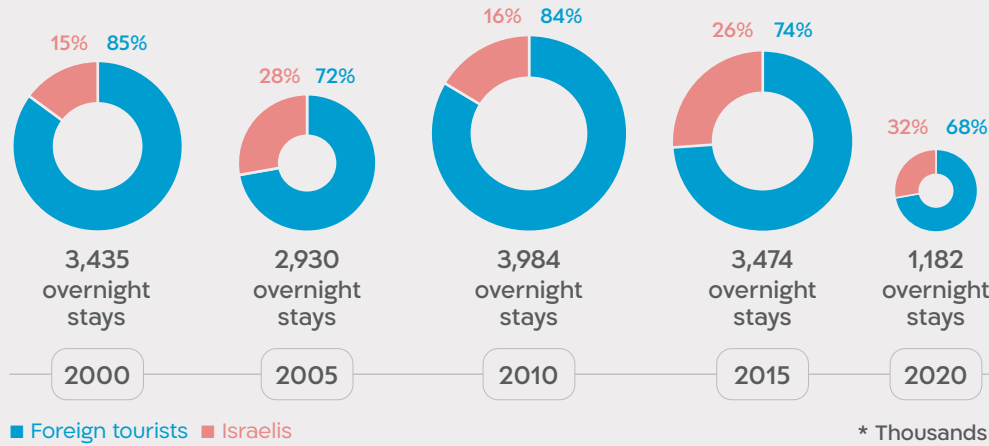
Jerusalem Institute for Policy Research



* Apartments that were built in buildings with 8 or more floors as a percentage of all apartments whose building began in 2017-2019.

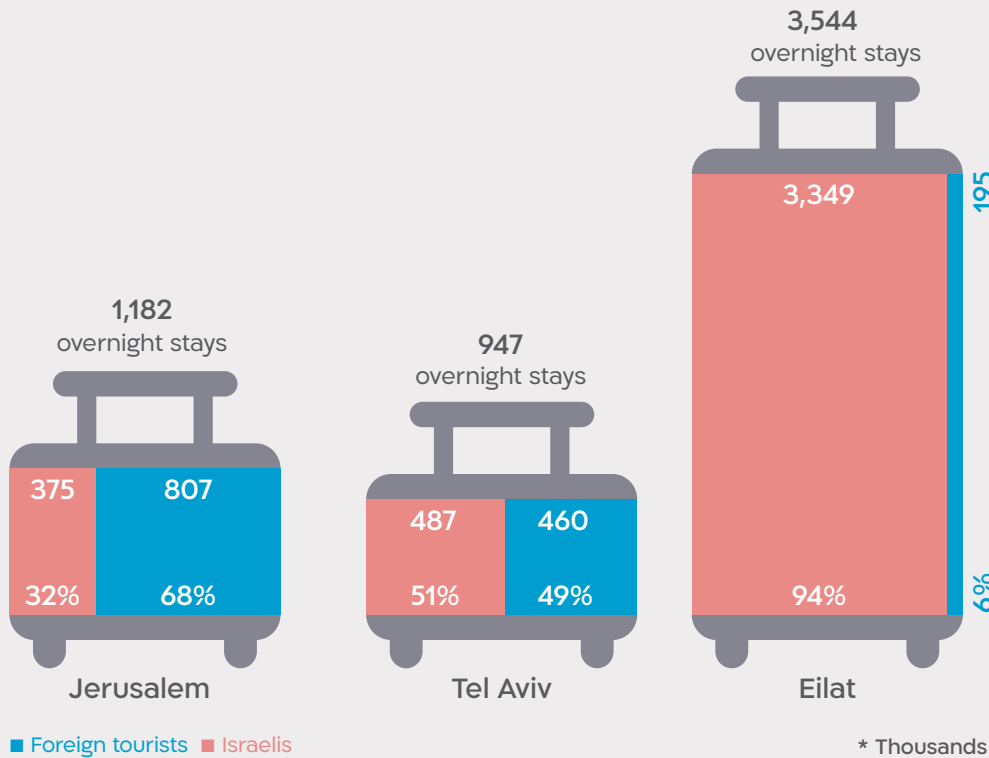
Overnight Stays of Foreign Tourists and Israelis* in Hotels in Jerusalem, 2000 – 2020

Jerusalem Institute for Policy Research



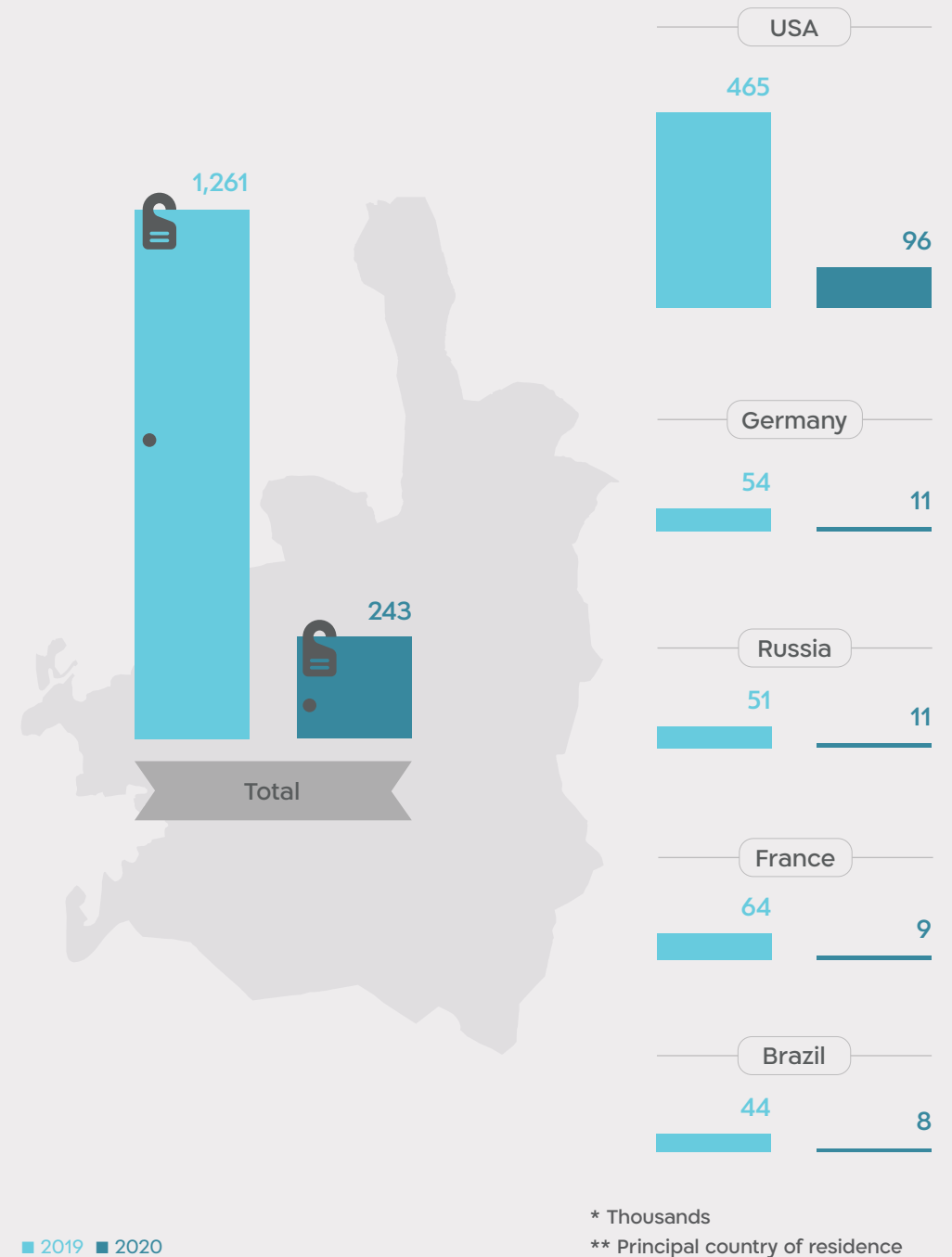
Overnight Stays of Foreign Tourists and Israelis* in Hotels in Jerusalem, Tel Aviv, and Eilat, 2020

Jerusalem Institute for Policy Research



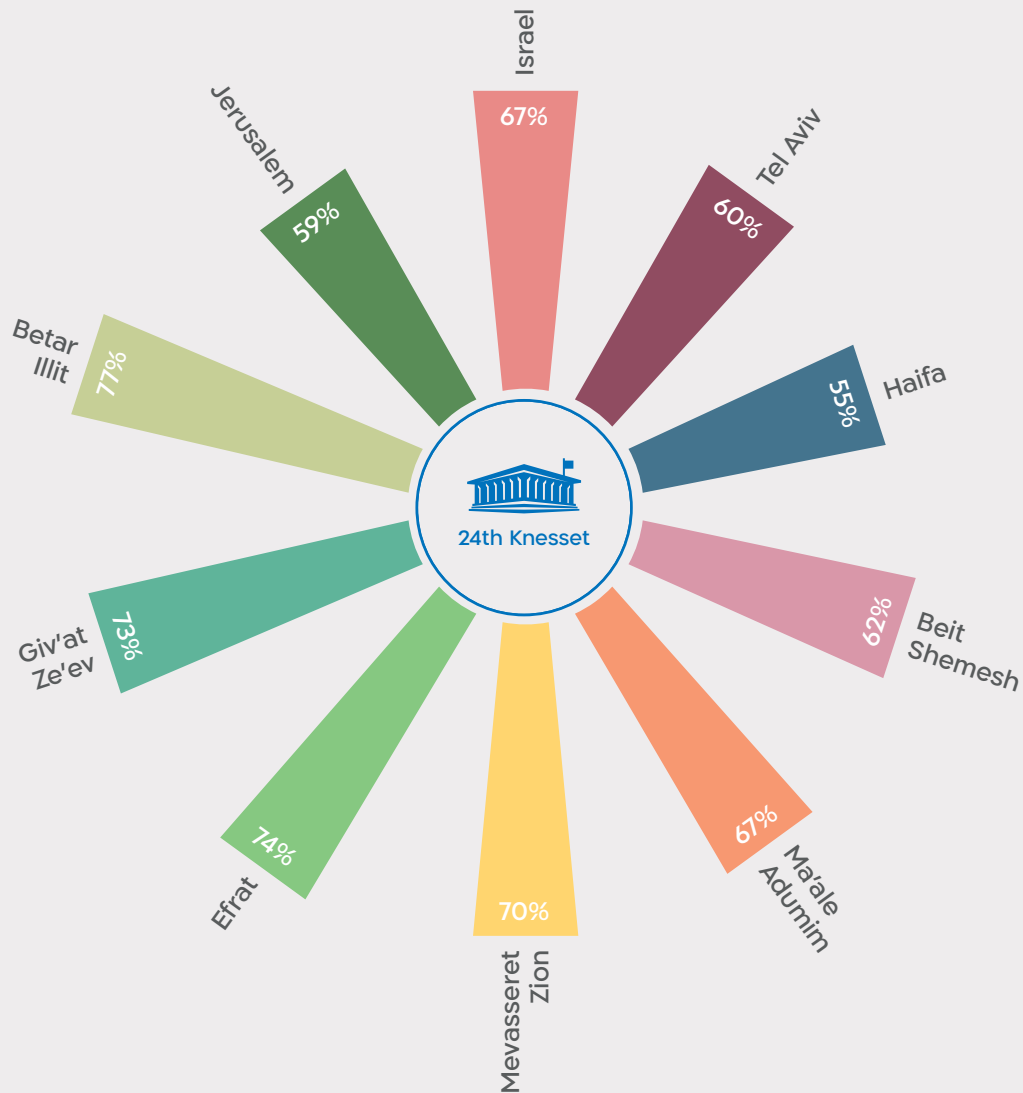
Guests* in Jerusalem Hotels by Country of Residence,** 2019 – 2020

Jerusalem Institute for Policy Research



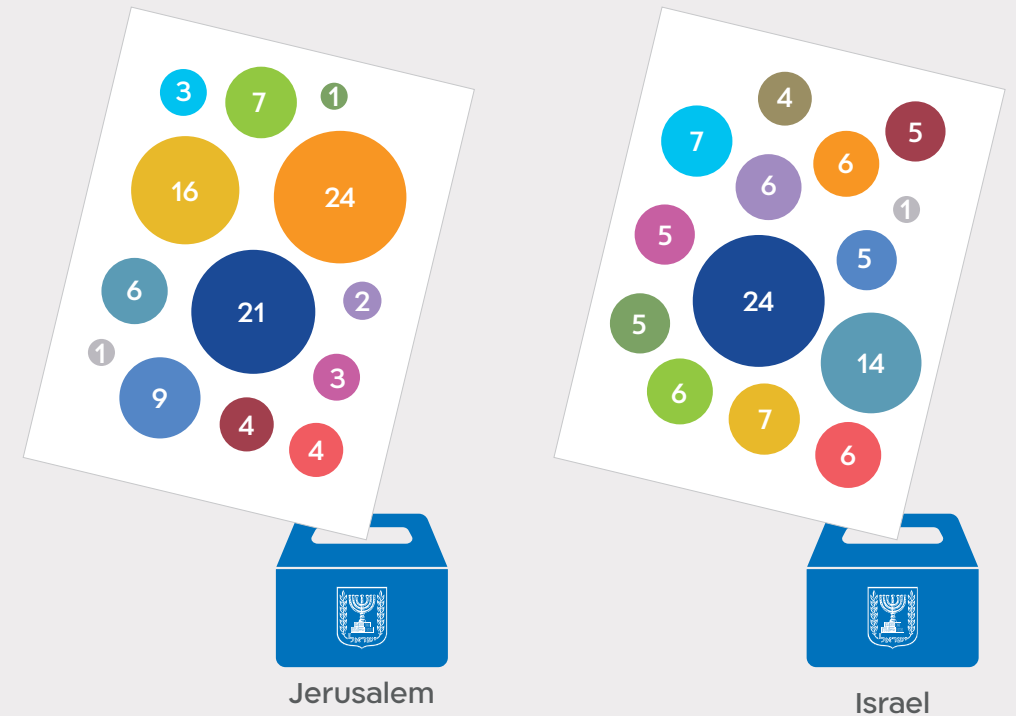
Voter Turnout in the 24th Knesset Elections in Major Cities and in Localities Near Jerusalem, 2021

Jerusalem Institute for Policy Research



Voting Distribution in the 24th Knesset Elections in Israel and Jerusalem, by Party, 2021

Jerusalem Institute for Policy Research



- Likud
- Yesh Atid
- Shas
- Kachol Lavan (Blue and White)
- Yamina
- Labor
- Yahadut HaTorah (United Torah Judaism)
- Yisrael Beiteinu (Israel Our Home)
- HaZionut HaDadit (Religious Zionist Party)
- HaReshima HaMeshutefet (Joint List)
- Tikva Hadasha (New Hope)
- Meretz
- HaReshima HaAravit HaMe'uhedet (United Arab List)
- Remaining parties

Board of Directors

Jerusalem Institute for Policy Research

Dan Halperin, Chairman of the Board

Ora Ahimeir

Avraham Asheri

Prof. Nava Ben-Zvi

David Brodet

Ruth Cheshin

Raanan Dinur

Prof. Hanoach Gutfreund

Dr. Ariel Halperin

Amb. Sallai Meridor

Gil Rivosh

Dr. Ehud Shapira

Anat Tzur

Lior Schillat, Director General

'Jerusalem: Facts and Trends – at a Glimpse' provides an up-to-date picture of Jerusalem across a wide range of topics, including population, employment, education, building, and tourism. This publication is brief, giving a snapshot of the main Facts and Trends in Jerusalem. The main source for data is the **Statistical Yearbook of Jerusalem**, an annual publication that provides policymakers and the general public with comprehensive and in-depth data on a wide range of issues relevant to life in Jerusalem.

The Jerusalem Institute for Policy Research is a think tank bringing forth from Jerusalem a sustainable social, economic and spatial doctrine. Policymakers have been turning to JIPR for investigation, advancement and specification of critical issues in the study of Jerusalem and Israel since its founding in 1978. JIPR's research, services and activities facilitate institutions and other entities in shaping innovative policies and implementing them effectively. For JIPR, Jerusalem serves as a source of inspiration, a field for study, a laboratory and a target space for influence. Highest on JIPR's agenda is Jerusalem's development for the greater good of its diverse inhabitants, its believers and all those who love the city, along with reinforcing its international standing.

Jerusalem Institute for Policy Research

20 Radak St., Jerusalem 9218604

Tel +972-2-5630175 | Fax +972-2-5639814 | Email INFO@JERUSALEMINSTITUTE.ORG.IL

WWW.JERUSALEMINSTITUTE.ORG.IL | WWW.JERUSALEMINSTITUTE.ORG.IL/EN